

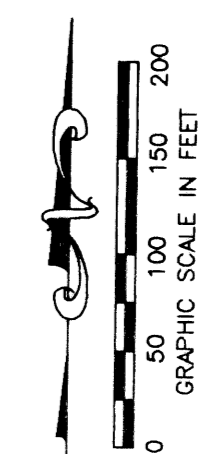
WINSTON TRAILS EAST

PART OF WINSTON TRAILS P.U.D.
SITUATE IN SECTION 2, TOWNSHIP 45 SOUTH, RANGE 42 EAST
PALM BEACH COUNTY, FLORIDA
MAY 1998 SHEET 5 OF 5

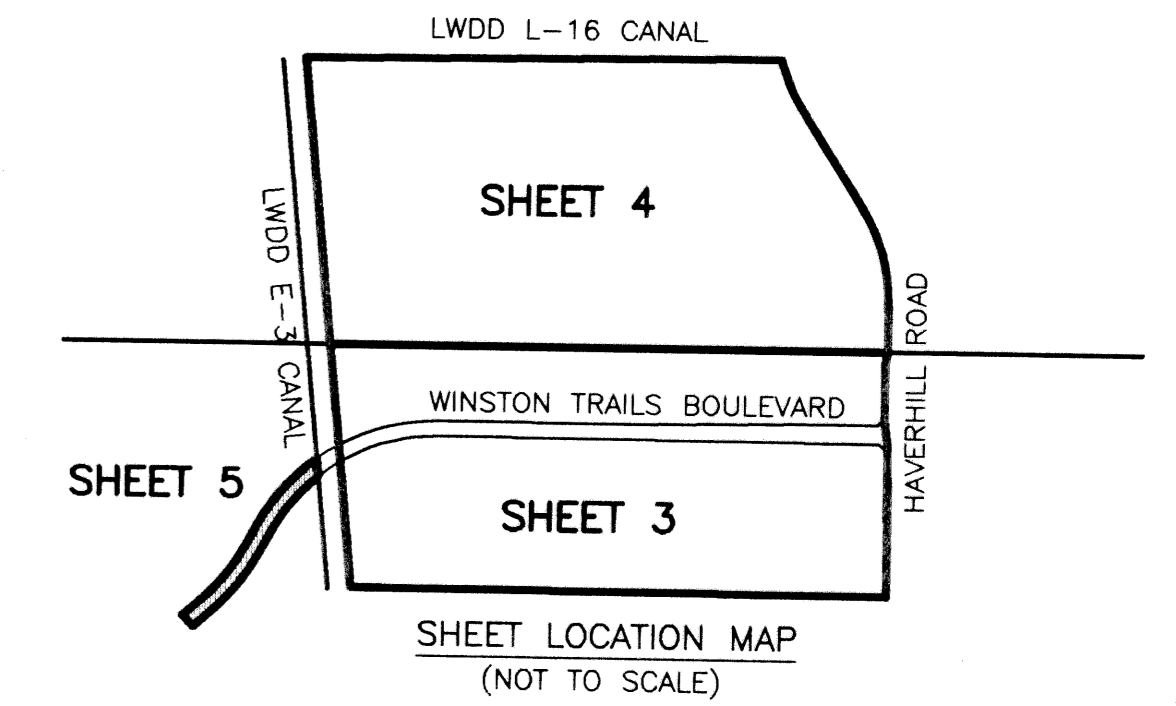
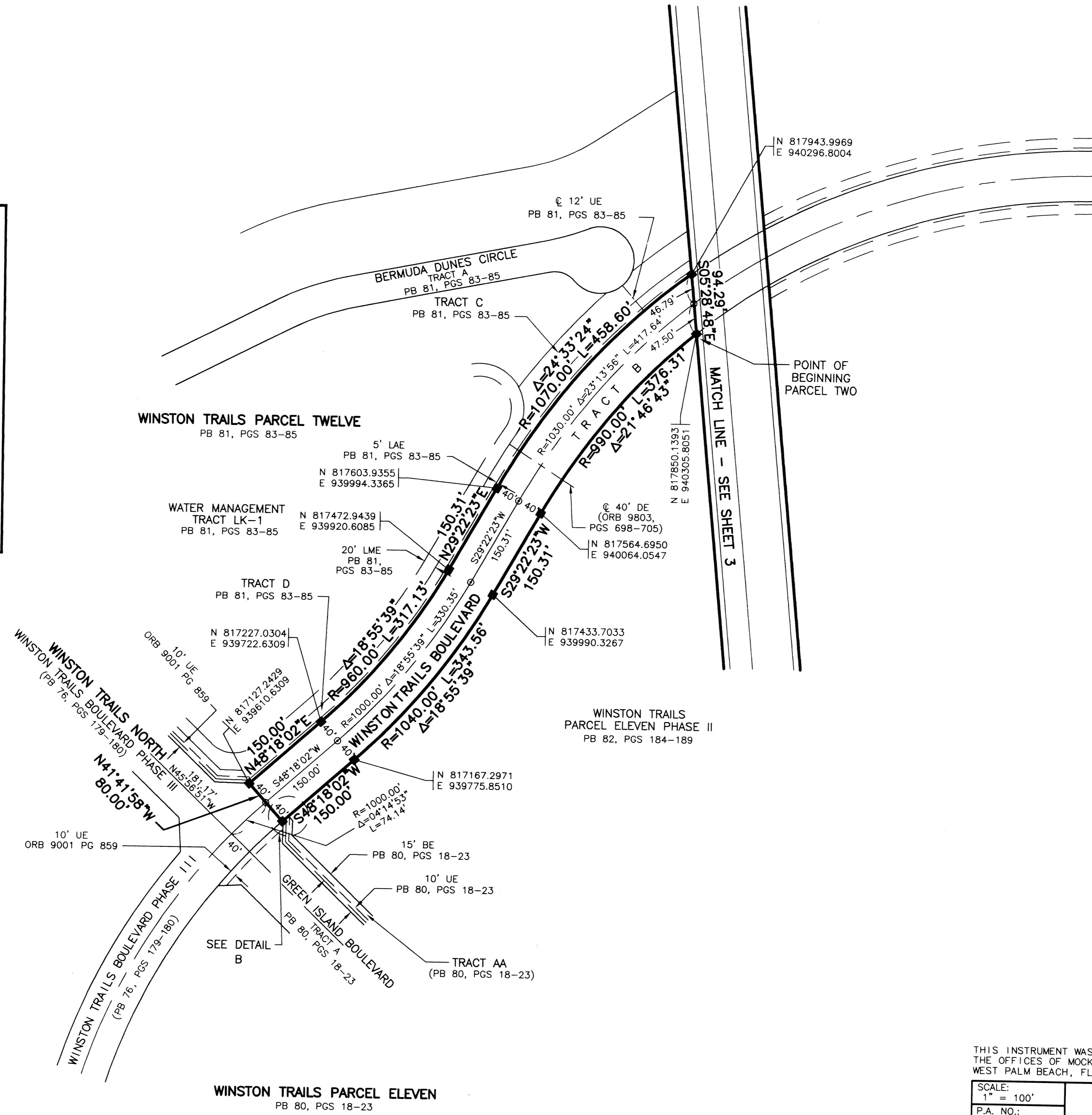
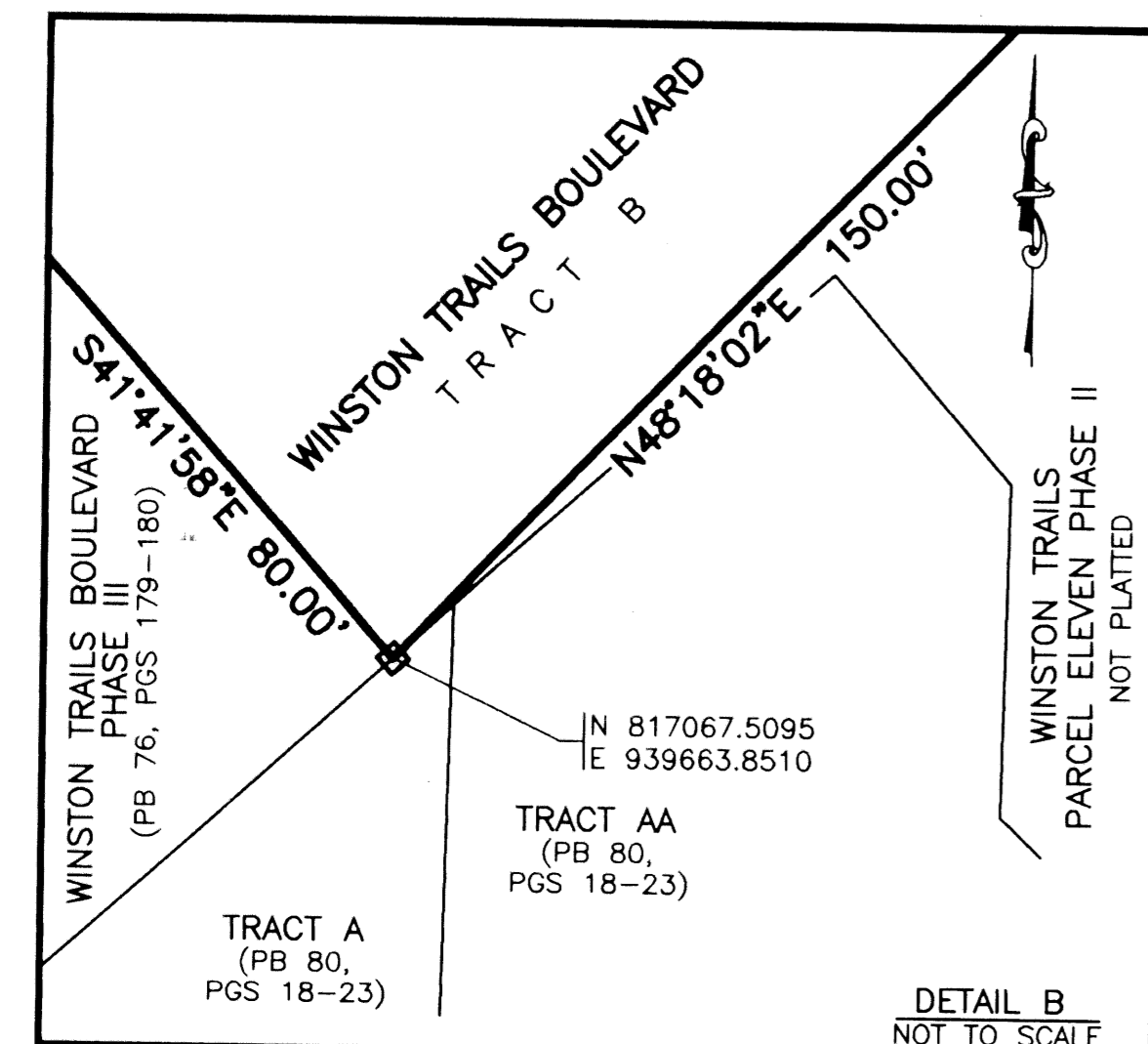
0587-028

78

STATE OF FLORIDA
COUNTY OF PALM BEACH
THIS PLAT WAS FILED FOR
RECORD _____ DAY OF _____
AD, 1999 AND DULY RECORDED
IN PLAT BOOK _____ ON PAGES
_____ AND _____
DOROTHY H. WILKEN, CLERK
BY: _____, D.C.



CIRCUIT COURT SEAL



- LEGEND**
- L ARC LENGTH
 - BE BUFFER EASEMENT
 - Δ CENTRAL (DELTA) ANGLE
 - DE DRAINAGE EASEMENT
 - LAE LIMITED ACCESS EASEMENT
 - LWDD LAKE WORTH DRAINAGE DISTRICT
 - ORB OFFICIAL RECORD BOOK
 - PB PLAT BOOK
 - PG(S) PAGE(S)
 - R RADIUS
 - ROW RIGHT-OF-WAY
 - UE UTILITY EASEMENT
 - ⊙ PERMANENT CONTROL POINT SET PSM# 4763
 - 4x4 CONCRETE PERMANENT REFERENCE MONUMENT SET PSM# 4763
 - 4x4 CONCRETE PERMANENT REFERENCE MONUMENT FOUND PSM# 4763
 - ⊕ CENTERLINE

- NOTES:**
- THE COORDINATES SHOWN HEREON ARE STATE PLANE GRID COORDINATES ACCORDING TO THE TRANSVERSE MERCATOR PROJECTION OF THE FLORIDA EAST ZONE, N.A.D. 83, PER THE 1990 ADJUSTMENT.
 - THE LINEAR DIMENSIONS SHOWN HEREON ARE GROUND DISTANCES IN U.S. FEET AND DECIMAL PARTS THEREOF.
 - THE GROUND DISTANCE TO GRID DISTANCE SCALE FACTOR IS 1.0000337 (GROUND DISTANCE X SCALE FACTOR = GRID DISTANCE).

THIS INSTRUMENT WAS PREPARED BY MARY HANNA CLODFELTER, P.S.M. IN THE OFFICES OF MOCK, ROOS & ASSOCIATES, INC., 5720 CORPORATE WAY, WEST PALM BEACH, FLORIDA 33407.

SCALE:
1" = 100'
P.A. NO.:
97012.00
DATE:
MAY 1998
DRAWING NO.:
45-42-02-102

MOCK • ROOS
ENGINEERS • SURVEYORS • PLANNERS
5720 Corporate Way, West Palm Beach, Florida 33407
(561) 683-3113, fax 478-7248

WINSTON TRAILS EAST
PART OF WINSTON TRAILS P.U.D.
SITUATE IN SECTION 2, TOWNSHIP 45 SOUTH,
RANGE 42 EAST
PALM BEACH COUNTY, FLORIDA

SHEET 5 OF 5

Winston Trails East
PAGE 78
FLOODING 175B
ZONING RS1SE
QUAD # 34
SB 87 448
ZIP CODE 33463
PUD NAME Winston Trails

WTEPR04.dwg 3-16-99 9:12:54 am EST

REV.: 03-16-99
CAD FILE:
MUSSWTEP/WTEPR04